

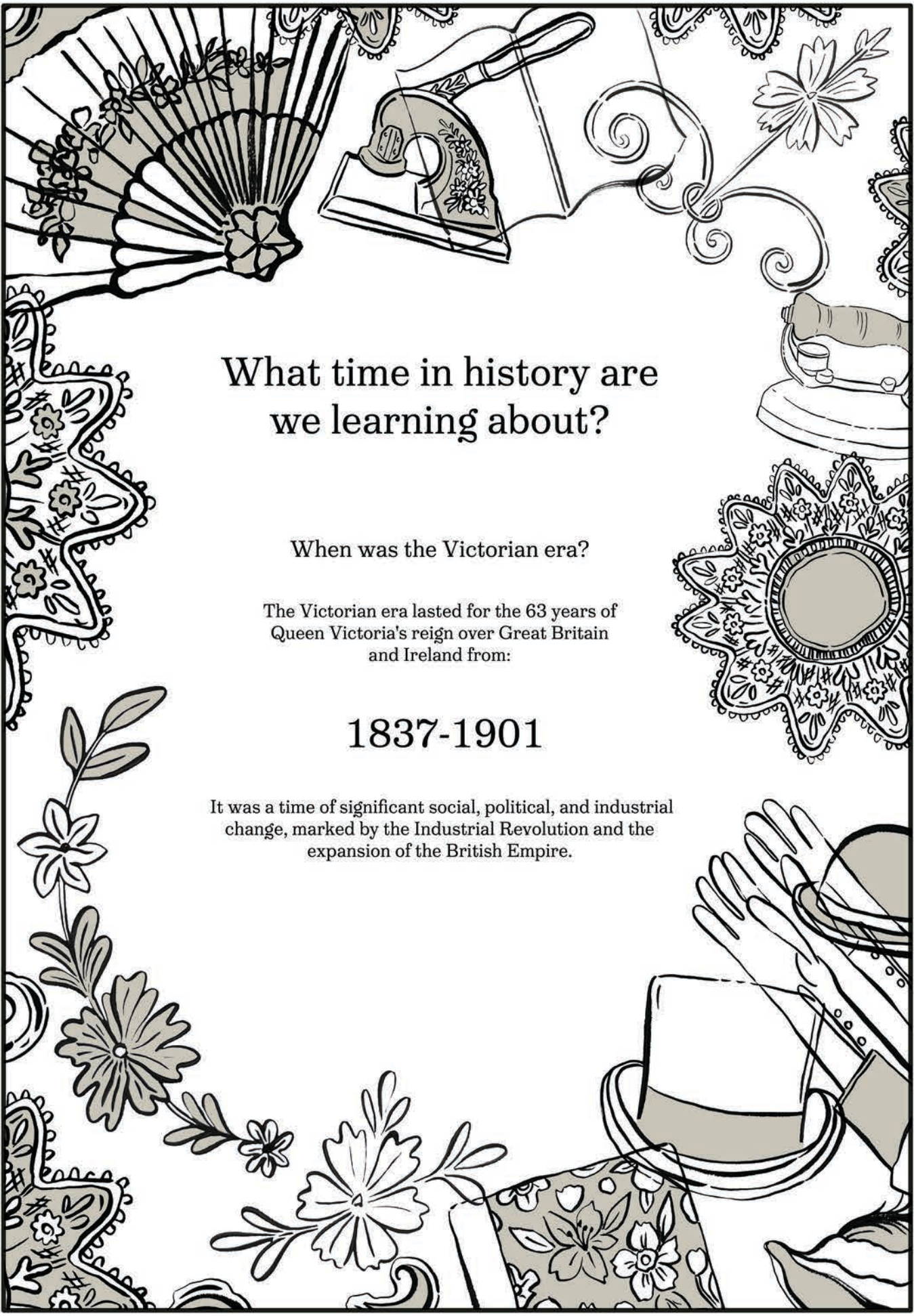
What is the Wandsworth Heritage Collection?

The Wandsworth Heritage Collection is a special group of historical items that help tell the story of the Wandsworth area. These items used to be part of the Wandsworth Museum, which closed in 2025. Today, the collection includes around 14,000 objects, such as:

- Paintings and watercolours showing scenes from around Wandsworth
- Archaeological finds from ancient times
- Old photographs, films, and documents
- Clothing, textiles, and furniture
- Decorative art and everyday items from the past

These objects help us learn about the social and industrial history of Wandsworth—from the Neolithic period (thousands of years ago!) all the way to the 2000s. Each item has a connection to the people, places, and events that shaped the borough over time.





What time in history are we learning about?

When was the Victorian era?

The Victorian era lasted for the 63 years of Queen Victoria's reign over Great Britain and Ireland from:

1837-1901

It was a time of significant social, political, and industrial change, marked by the Industrial Revolution and the expansion of the British Empire.



Domestic Life and Community Resource: KS2

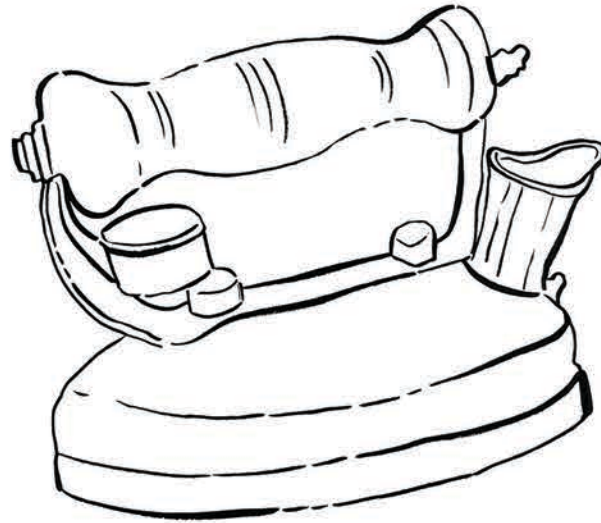
Form and Function:

What are these resources about?

The resources within this creative pack have been brought together by Wandsworth Arts & Culture Service - Wandsworth Council, The Wandsworth Heritage Collection and Illustrator Grace Holliday as part of the London Borough of Culture 2025 and Wandsworth Heritage Festival. They will introduce special items from the collection that connect with our learning themes. The aim of these resources is to learn about the history of the Wandsworth Borough and beyond. We will explore how we can compare the past to the present through fun making activities.

What is domestic life?

Life within the home. Domestic life is all about family and everyday activities such as chores. These are daily routines that tell us more about our relationships with others and the objects that we use to help us. Domestic tasks include cooking, cleaning and caring for pets or plants.



Domestic Life

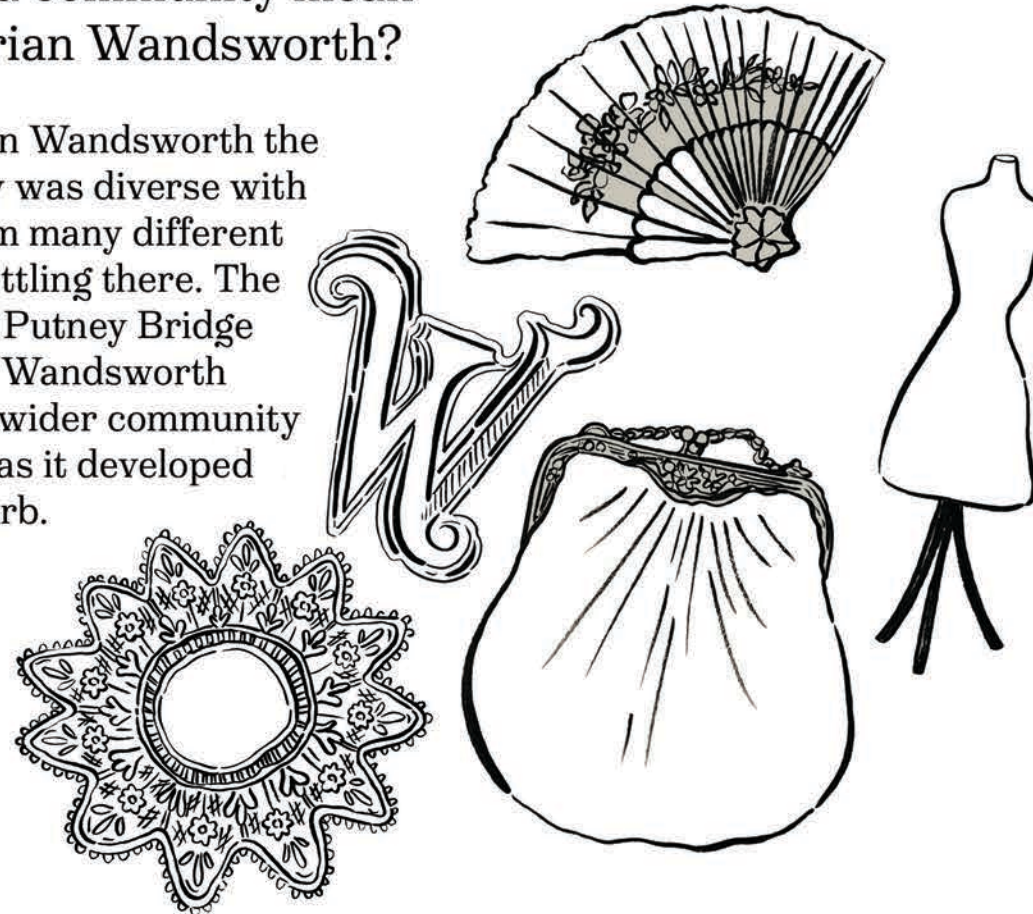
Victorian domestic life was a period of comfort for some and hard work for others.

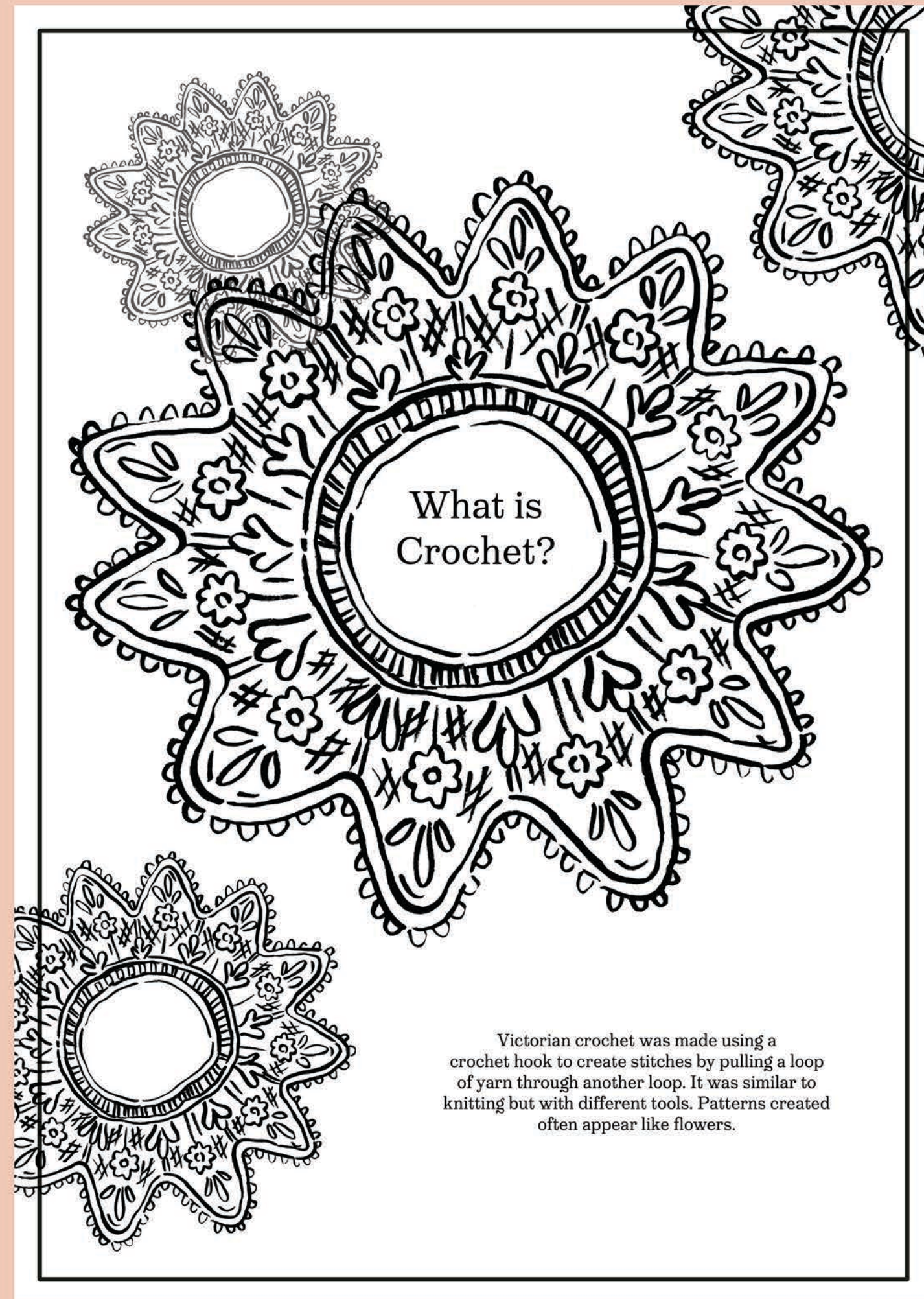
The rich and the poor had very different experiences. Women would often do the chores at home and sometimes children would help.

Town houses were much bigger and had servants for daily domestic tasks. Terraced houses were smaller with living spaces that had to be shared.

What did community mean in Victorian Wandsworth?

In Victorian Wandsworth the community was diverse with people from many different cultures settling there. The building of Putney Bridge connected Wandsworth to an even wider community in London as it developed into a suburb.





Victorian crochet was made using a crochet hook to create stitches by pulling a loop of yarn through another loop. It was similar to knitting but with different tools. Patterns created often appear like flowers.

Community Crochet



Write in this box what the community of Wandsworth and your local area means to you. Is there something about the borough and local area that you think is really positive and should be celebrated?

Object and Function:



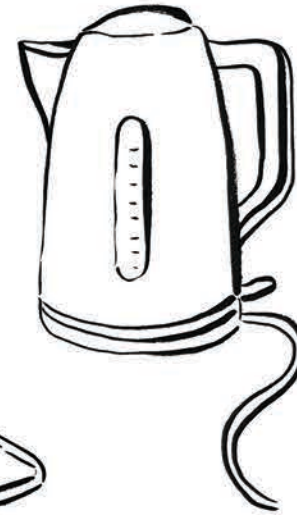
Object and function task connecting historical everyday life to today. Can you spot which objects are Victorian and connect to the shopping list of different tasks? Connect them with drawn lines. Then write your own list of your favourite everyday items that help you at school and home. How are they different?

My Everyday
Items:



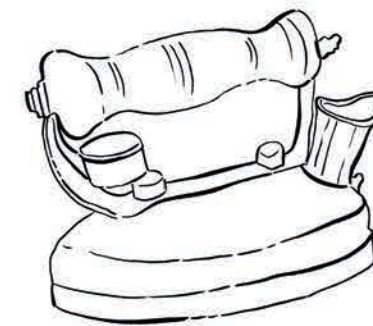
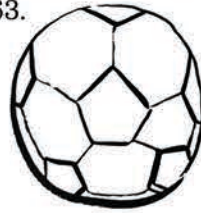
1. _____
2. _____
3. _____
4. _____
5. _____
6. _____

Object and Function:



Victorian stamp presses were used to emboss or imprint designs onto paper.

Modern football, is widely considered to have originated in England in the mid-19th century, with the formalization of the rules in 1863.

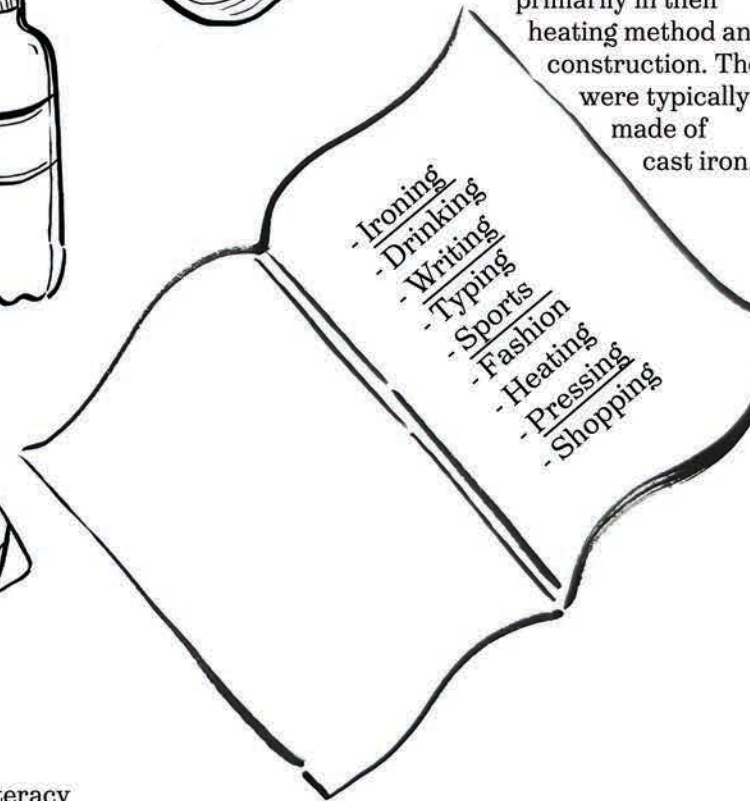


Victorian irons differed from modern irons primarily in their heating method and construction. They were typically made of cast iron.

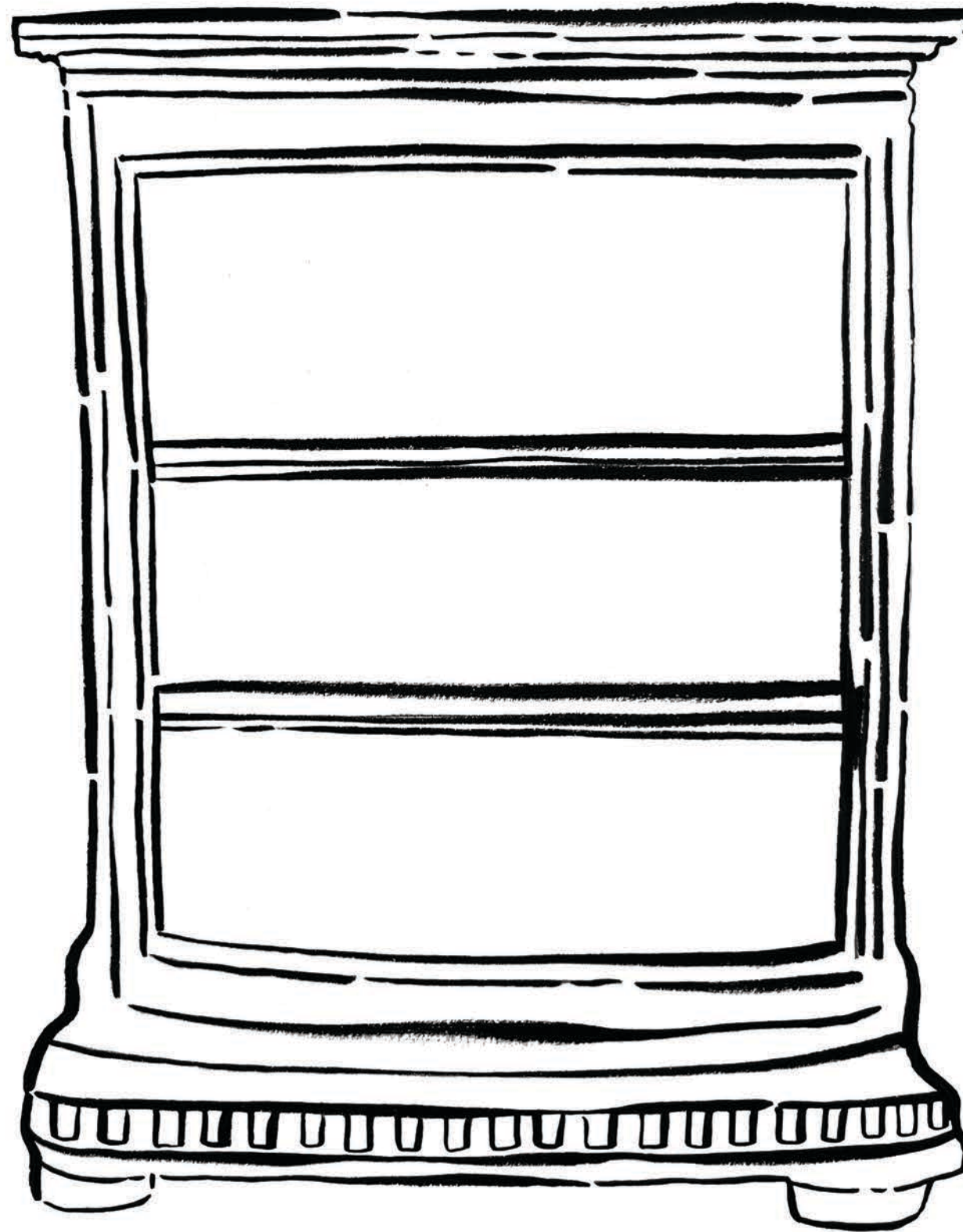


Victorians extensively used notebooks for various purposes.

The Victorian era saw an increase in literacy and the mass production of paper, making notebooks more affordable and accessible.



Extension Task: Community Cabinet



Create your own 'community cabinet' by drawing your favourite everyday objects from your list onto the template illustration. Add colour and texture to bring the cabinet to life!

My Wandsworth



Create a spider diagram of all the good things that begin with the letter 'W' for Wandsworth in your local area. Draw lines from the Victorian 'W' letter, adding your own descriptions - for example:
Wonderful Parks or Warm Coffee Shops ...



Resource Materials:

- Core:

- Digital slides / printouts of collection photo gallery
- Printed resource tasks / information sheets A4/A3
- A4 or A3 white cartridge paper
- Colouring pencils
- Drawing pencils
- Colouring pens

- Optional:

- Paints (any kind)
- Paint brushes
- Water pots
- Printed resource templates
- * (printed on thicker paper)
- Ruler / Erasers

* All illustrated resources within this pack can be used as colour sheets for students to make their own - using colour palettes from the archive collection, or their own imaginations.

Wandsworth Heritage Collection Gallery:

A selection of photos bringing together the objects and artefacts from the collection that inspired these illustrated resources and creative tasks. Each item has its very own story to tell!

What will we discover?



These colour samples have been directly influenced by colours of Victorian objects within the Wandsworth Heritage Collection.

* Photographs from a photography studio, Sydenham, established 1864.



* Victorian Notebook.
* Victorian Fabric Sampler.





- * Victorian Crochet.
- * Victorian Shovel.



* Victorian Crochet.



*Victorian Embroidered Alphabet.



* Victorian Embroidery Book - Made in Germany.



* Victorian Singer Sewing Machine and Table.



* Victorian Embroidery Book.



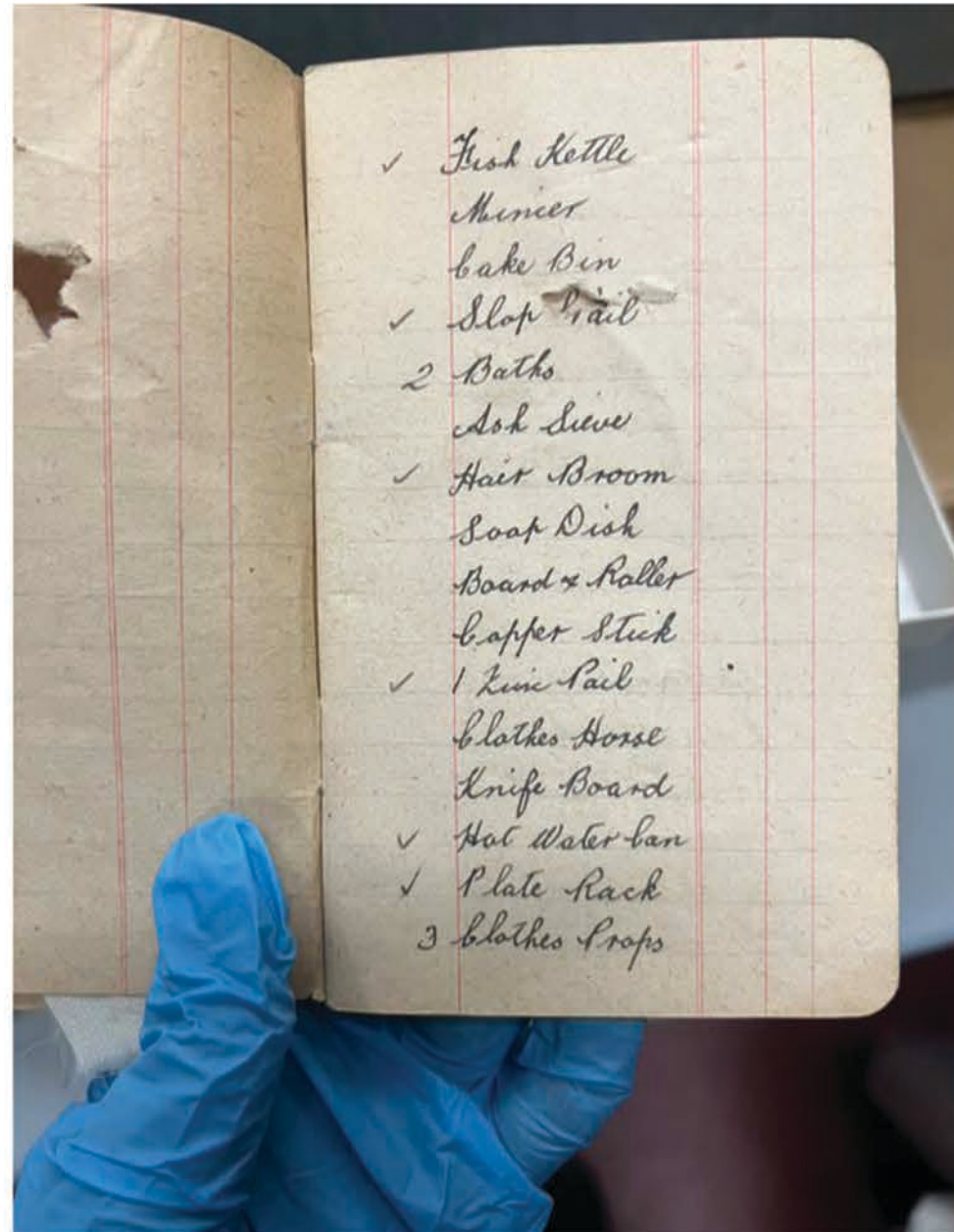
* Victorian Bike.



* Victorian Type Writer and Embossing Press



* Victorian Door Knockers and Iron.

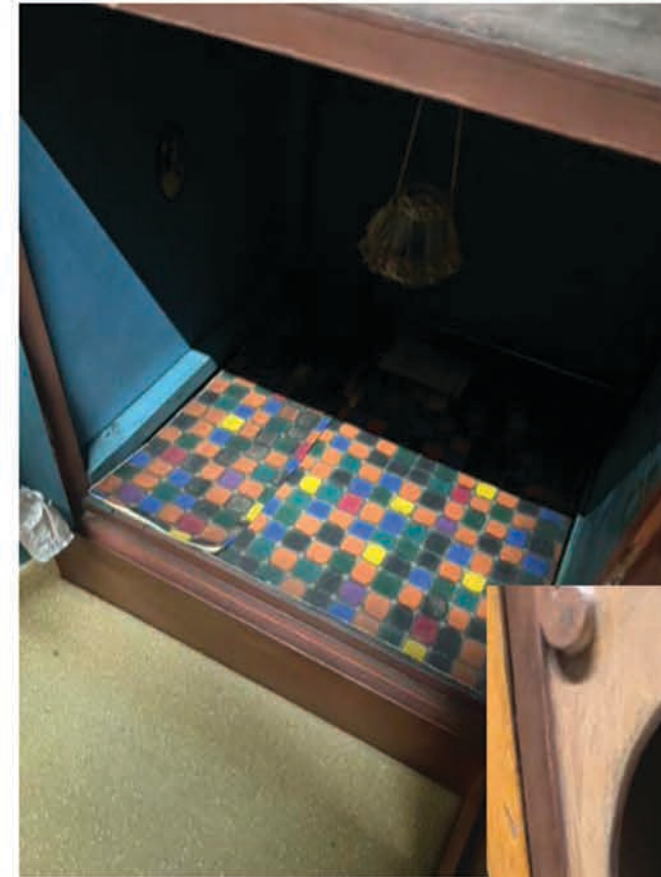


* Victorian Shopping List and Cooking Utensils.





* Victorian Terraced Houses
and School, Wandsworth, W64.



* Victorian Inspired Dolls House.



* Victorian Inspired Dolls House.





Fashion Resource: KS2 Build your Own Outfit:

What are these resources about?

The resources within this creative pack have been brought together by Wandsworth Arts & Culture Service - Wandsworth Council, The Wandsworth Heritage Collection and Illustrator Grace Holliday as part of the London Borough of Culture 2025 and Wandsworth Heritage Festival. They will introduce special items from the collection that connect with our learning themes. The aim of these resources is to learn about the history of the Wandsworth Borough and beyond. We will explore how we can compare the past to the present through fun making activities.

What was the fashion like during this time?

In Victorian Wandsworth, fashion was influenced by social class and practical needs, with different styles for different groups. Wandsworth was known for its hat industry, and even today, you can find fashion inspiration in Wandsworth.

Where are these places?

Social Class:

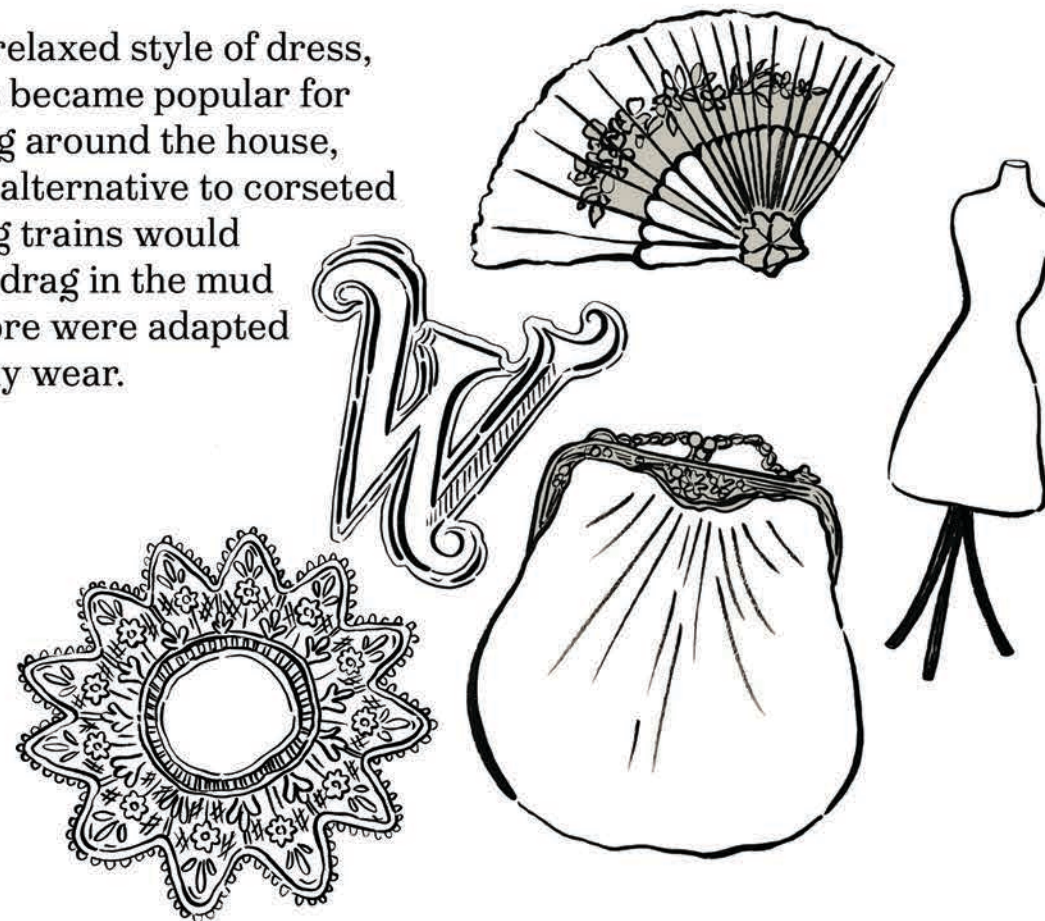
Victorian fashion was often a reflection of the upper and working classes. The way that clothes were designed would need to be practical, beautiful and sometimes personalised.

Hats:

Wandsworth was historically known for its hat industry, making hats an important part of Victorian fashion. For women, common styles included bonnets, sunbonnets, and hats often decorated with trimmings. Men's hats were top hats, bowler hats, and other styles like homburgs and trilbys.

Tea Dresses:

As a more relaxed style of dress, tea dresses became popular for entertaining around the house, offering an alternative to corseted styles. Long trains would sometimes drag in the mud and therefore were adapted for everyday wear.



Local Businesses:

Wandsworth offered a variety of local businesses, including tailors and hat-makers, delivering everyday and formal fashion to the local community and beyond.

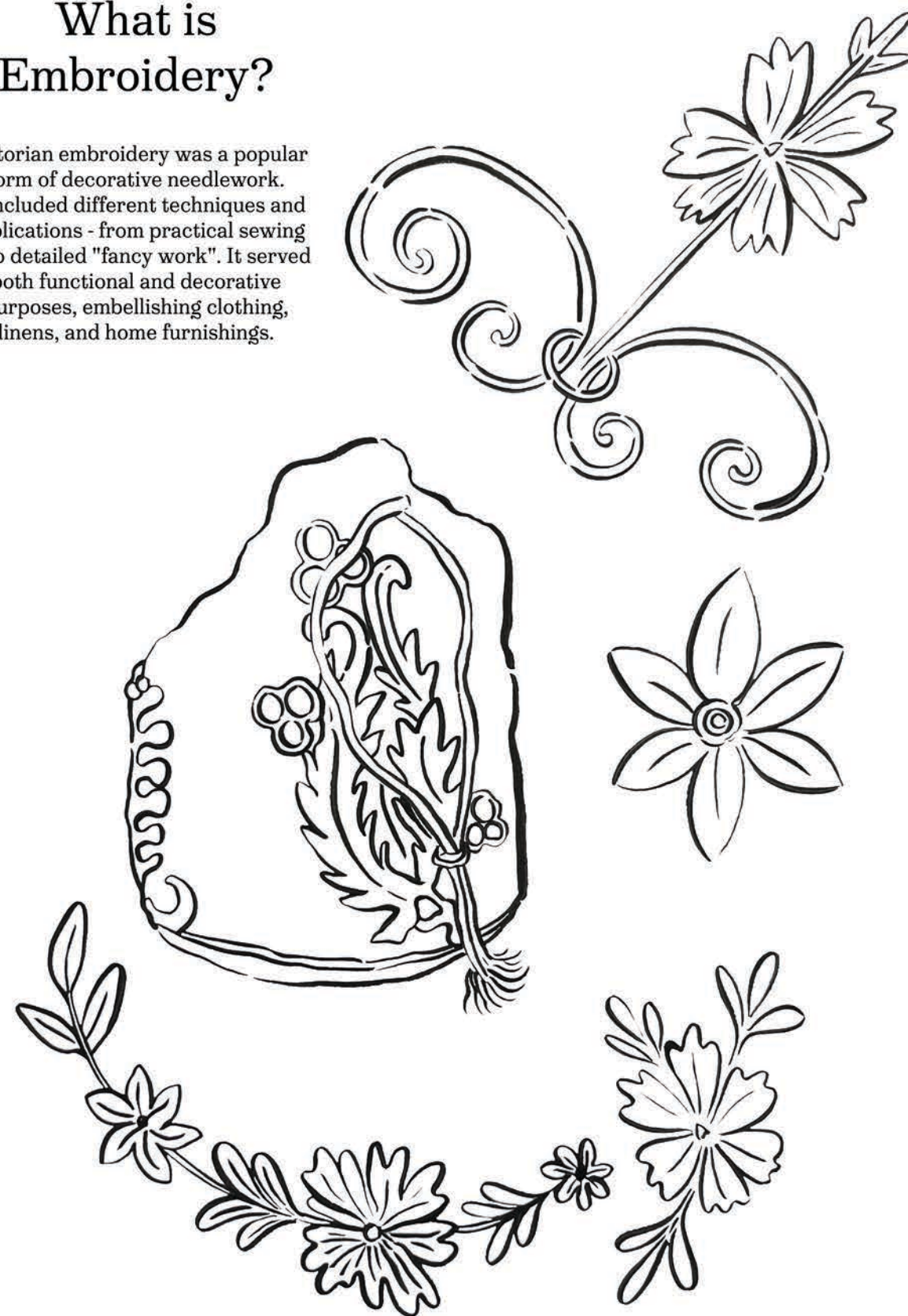
In the Victorian era, millinery, the art of making hats, was a thriving industry and a significant aspect of the fashion of the day. Milliners designed and created a wide array of hats, bonnets, and other headwear, often incorporating intricate details and embellishments. These creations were not just functional but also served as important fashion statements, reflecting social status and personal style.



What would be your style?



What is Embroidery?

Victorian embroidery was a popular form of decorative needlework. It included different techniques and applications - from practical sewing to detailed "fancy work". It served both functional and decorative purposes, embellishing clothing, linens, and home furnishings.






Build your own Outfit:

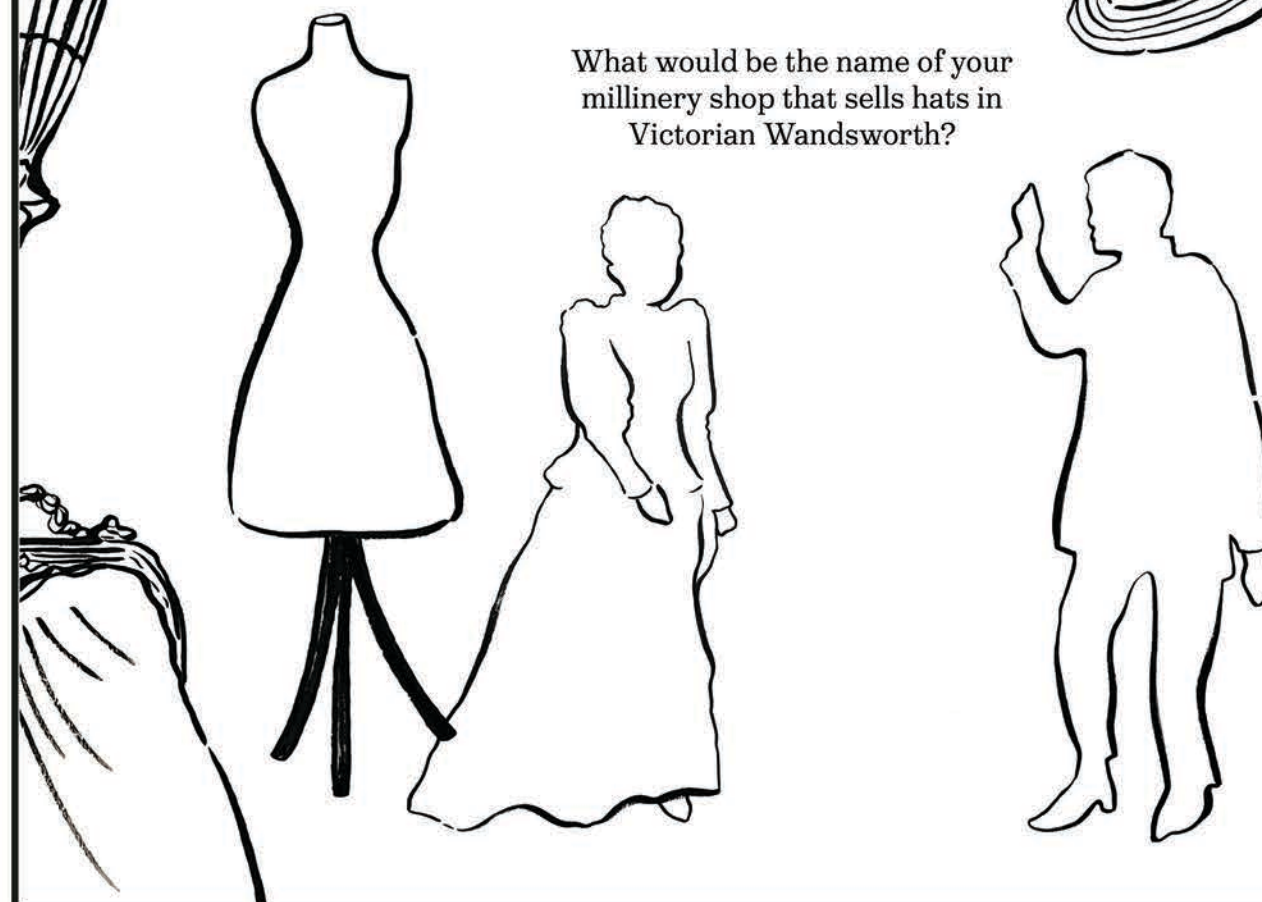
Use the template figures in the resource sheets to draw and colour a unique outfit onto - including accessories inspired by the illustrated 'closet collection' such as hats, bags, gloves and umbrellas.

Extension Task:

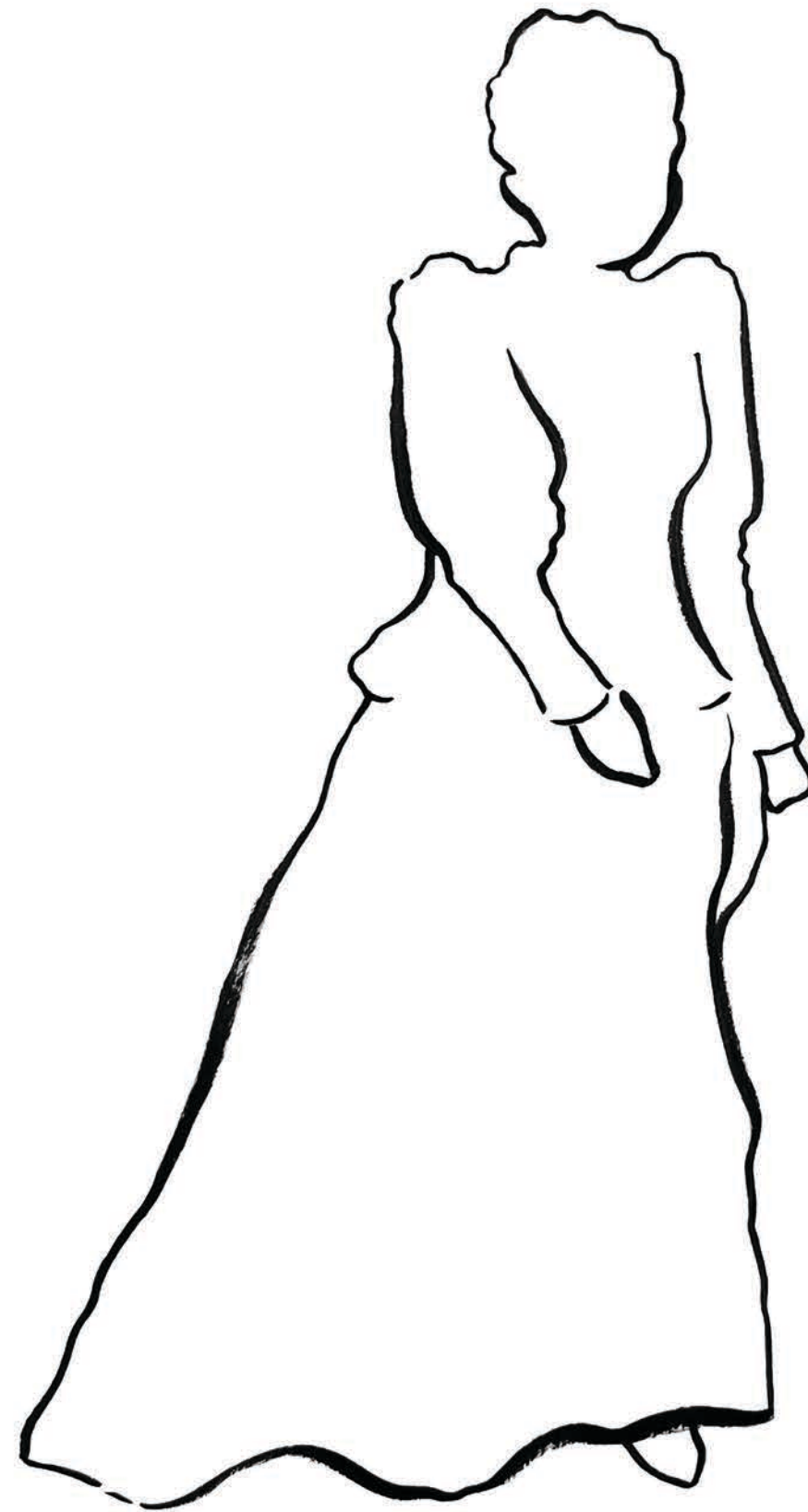
Draw a self portrait of you wearing a Victorian hat in the illustrated picture mount template. Decorate this frame with your name and an embroidery style pattern using colour and detail.

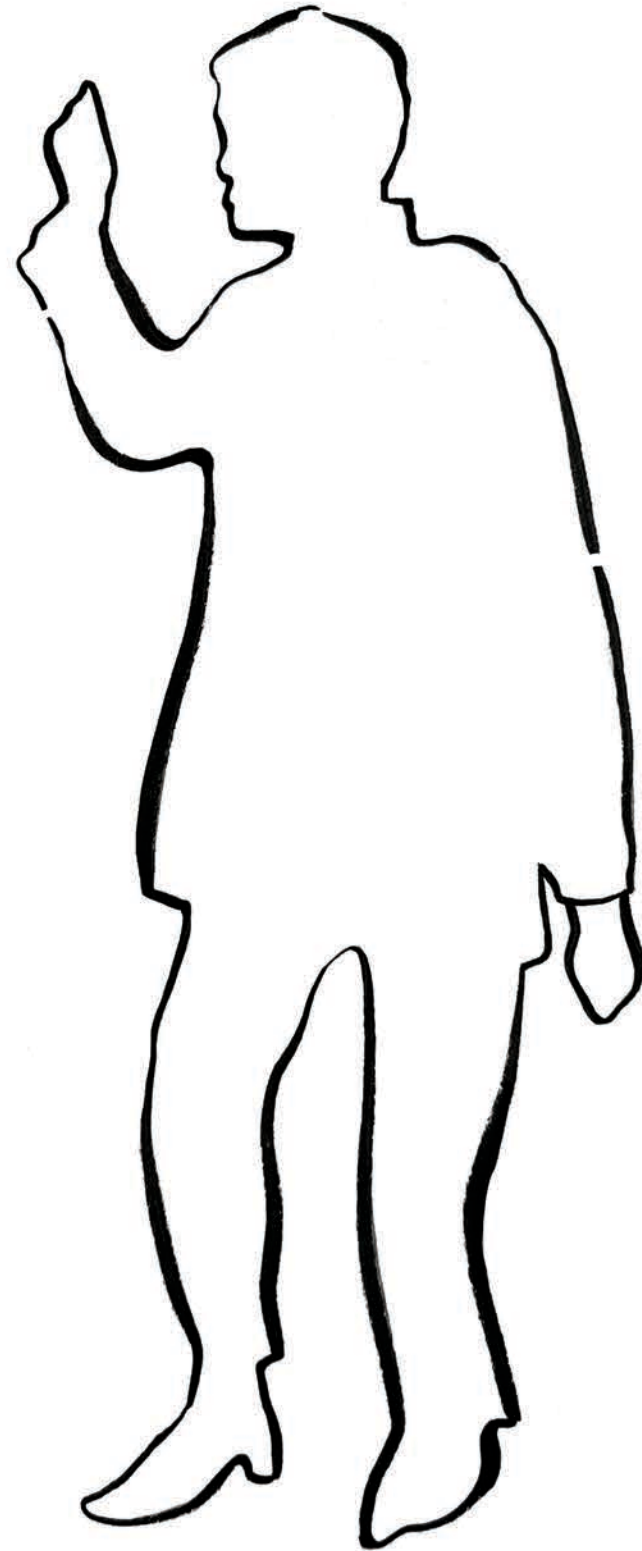


What would be the name of your millinery shop that sells hats in Victorian Wandsworth?

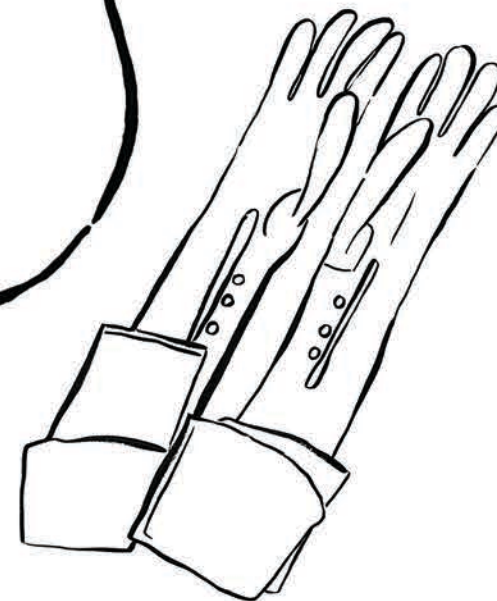
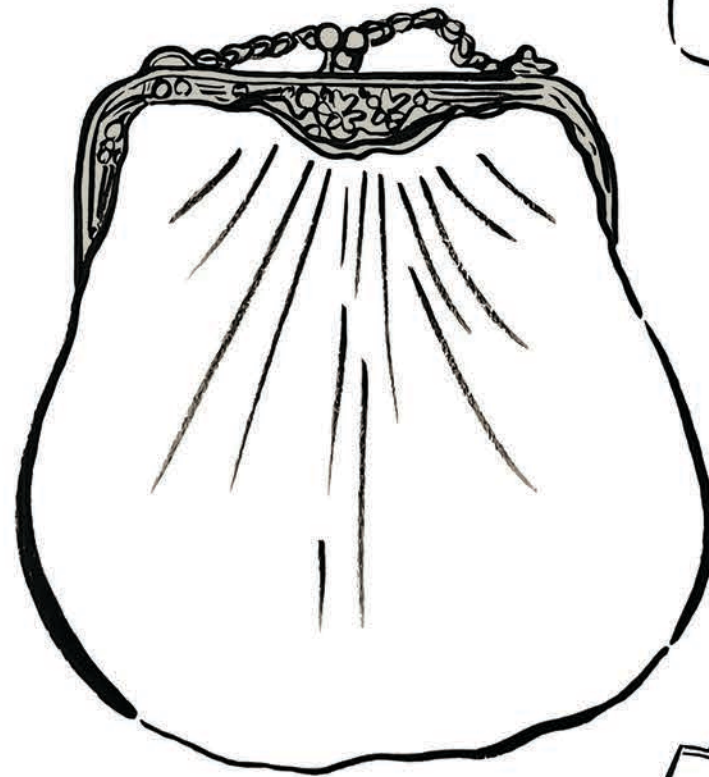
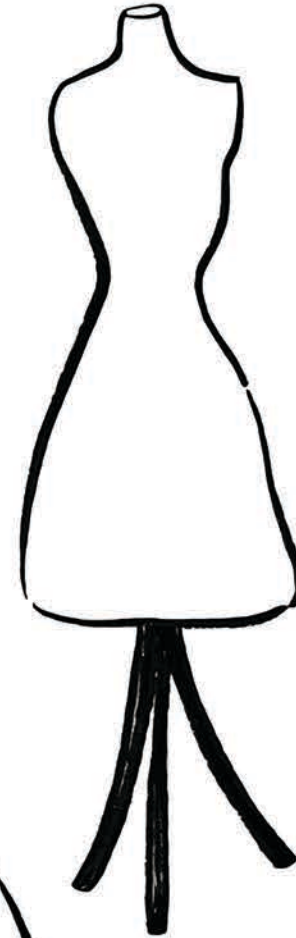
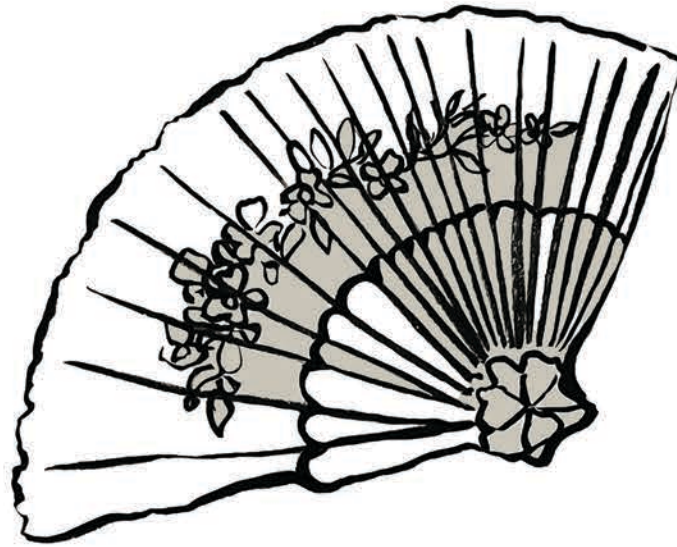






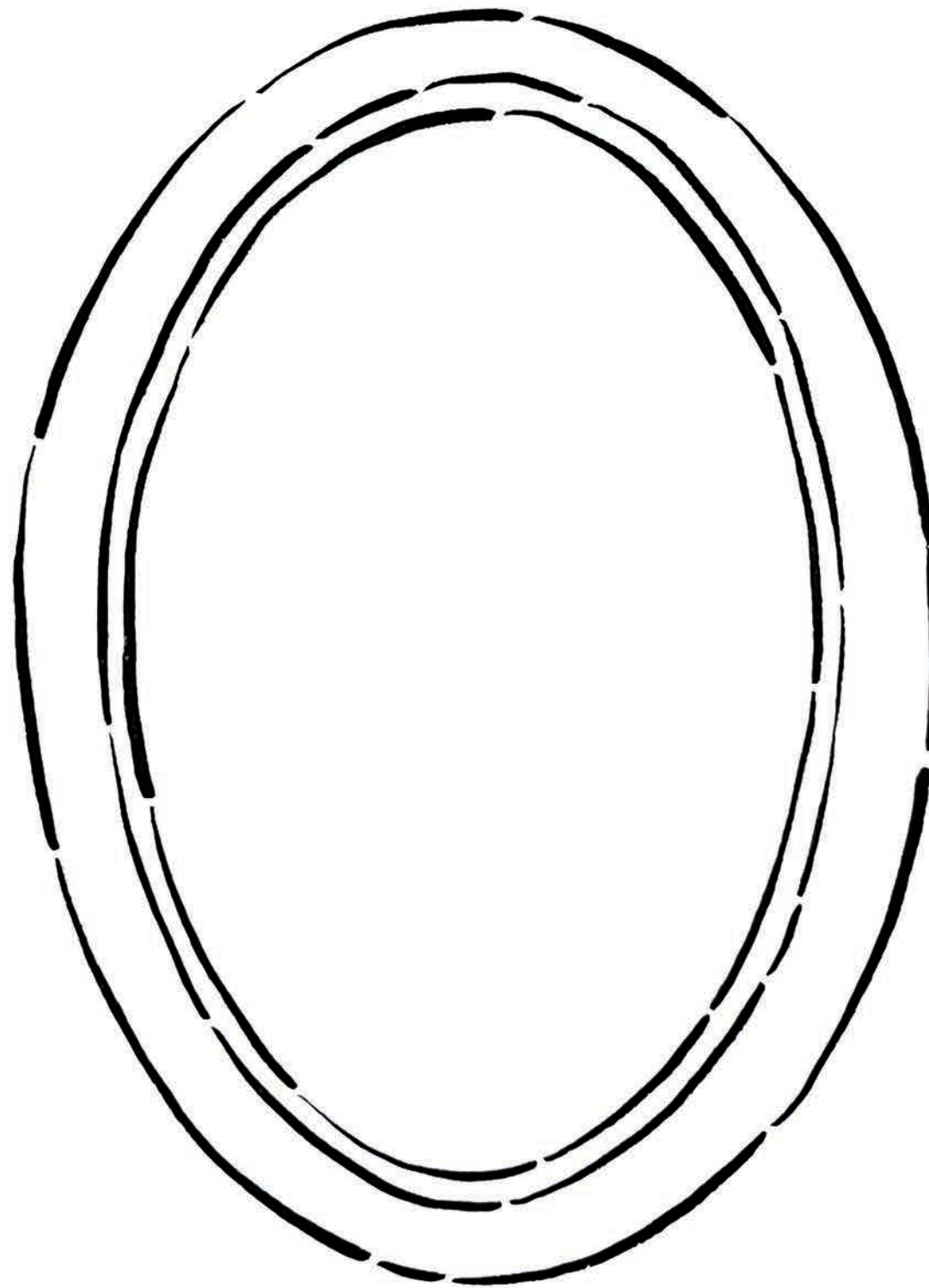


Closet Collection:



For your own fashion designs, take inspiration from the illustrations and photos in the resource pack. You can also use your own imagination to add different colours, textures and patterns - express yourself!

My Victorian Portrait:



* Victorian bag - beads,
thread and velvet.





- * Victorian bag - silk, floral embroidery and thread.
- * Victorian photo album with mount.



- * Victorian corset packaging.
- * Victorian portrait photograph, H. Hallier, Sydenham High Street.



* Victorian gloves - Silk and pearl buttons.



- * Victorian fabric and metal purse / bag
- * Victorian feather fan.



- * Victorian metal and beads purses / bags.
- * Victorian lace fabric floral fan.



* Mannequin for
Edwardian Costume



Resources produced with funding connected to the London Borough of Culture 2025 and Wandsworth Heritage Festival.

Resource design and development by illustrator Grace Holliday in collaboration with Wandsworth Arts & Culture Service and Wandsworth Libraries & Heritage Service.

*Wandsworth Heritage Service cares for the archives of the borough of Wandsworth. These include records from Wandsworth Borough Council and its predecessor bodies (e.g. Wandsworth and Battersea Parishes) as well as deposited collections such as records from local charities and organisations, schools, individuals, and families.

MAYOR OF LONDON

London Borough of Culture is a Mayor of London initiative.



Supported using public funding by
**ARTS COUNCIL
ENGLAND**



WANDSWORTH
LIBRARIES

BETTER

